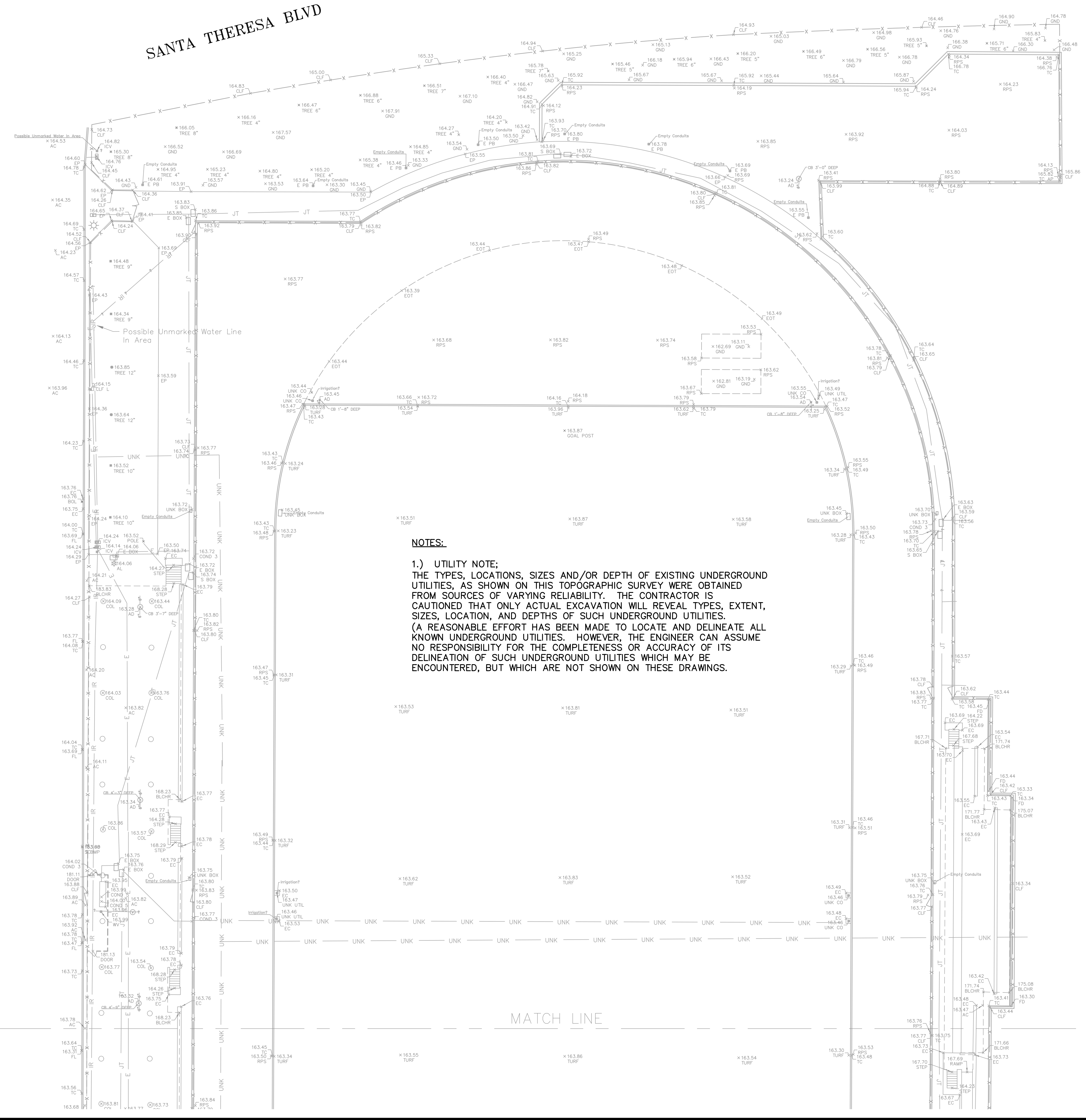


Construction Contractor agrees that in accordance with generally accepted construction practices, construction contractor shall be responsible to assume sole and complete responsibility for job site conditions during the course of construction of the project including safety of all persons and property; that this requirement shall be made to apply continuously and not be limited to normal working hours, and construction contractor further agrees to defend, indemnify and hold design professional harmless from any and all liability, real or alleged, in connection with the performance of work on this project, excepting liability arising from the sole negligence of design professional.

SANTA TERESA BLVD



LEGEND

DESCRIPTION	SYMBOL
FENCE LINE	— X — X — X
BUILDING LINE	— H — H — H
UNDERGROUND ELECTRICAL	— E — E — E
UNDERGROUND IRRIGATION	— IR — IR — IR
UNDERGROUND JOINT UTILITIES	— JT — JT — JT
UNDERGROUND WATER	— W — W — W
UNDERGROUND UNKNOWN	— UNK — UNK — UNK
UNDERGROUND SANITARY SEWER	— SS — SS — SS
UNDERGROUND STORM SEWER	— SD — SD — SD

ABBREVIATIONS

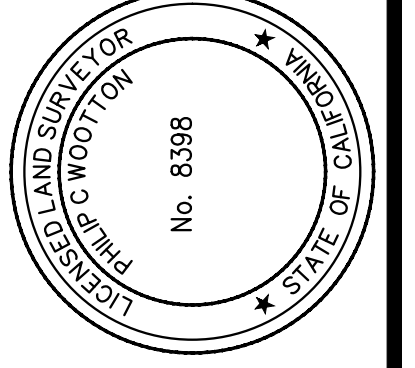
AC	ASPHALT CONCRETE
AD	AREA DRAIN
AL	AREA LIGHT
BC	BUILDING CORNER
BOW	BACK OF WALK
BOL	BOLLARD
BFP	BACKFLOW PREVENTER
BL	BUILDING LINE
CB	CATCH BASIN
CLF	CHAIN—LINK FENCE
C	CONCRETE
C BOX	COMMUNICATIONS BOX
COL	COLUMN
EC	EDGE OF CONCRETE
EP	EDGE OF PAVEMENT
EOT	EDGE OF TRACK
E BOX	ELECTRICAL BOX
E PB	ELECTRICAL PULL BOX
FF	FINISHED FLOOR ELEVATION
FL	FLOW LINE
FP	FLAG POLE
G HNG	GATE HINGE
G LATCH	GATE LATCH
GB	GRADE BREAK
GND	GROUND ELEVATION
JP	JOINT POLE
ICV	IRRIGATION CONTROL VALVE
INV	INVERT
MH	MANHOLE
PS	PARKING STRIPE
RPS	RUBBERIZED PLAY SURFACE
RTWL	RETAINING WALL
RWLS	RAINWATER LEADER SURFACE RELEASE
RWLG	RAINWATER LEADER UNDERGROUND RELEASE
S BOX	SIGNAL BOX
SD	STORM DRAIN
SL	STREET LIGHT
SS	SANITARY SEWER
SSCO	SANITARY SEWER CLEANOUT
TC	TOP OF CURB
TV	TELEPHONE VAULT
WF	WROUGHT—IRON FENCE
WF	WATER FOUNTAIN
WM	WATER METER
WV	WATER VALVE

NOTES:

1.) UTILITY NOTE;
 THE TYPES, LOCATIONS, SIZES AND/OR DEPTH OF EXISTING UNDERGROUND UTILITIES, AS SHOWN ON THIS TOPOGRAPHIC SURVEY WERE OBTAINED FROM SOURCES OF VARYING RELIABILITY. THE CONTRACTOR IS CAUTIONED THAT ONLY ACTUAL EXCAVATION WILL REVEAL TYPES, EXTENT, SIZES, LOCATION, AND DEPTHS OF SUCH UNDERGROUND UTILITIES. (A REASONABLE EFFORT HAS BEEN MADE TO LOCATE AND DELINEATE ALL KNOWN UNDERGROUND UTILITIES. HOWEVER, THE ENGINEER CAN ASSUME NO RESPONSIBILITY FOR THE COMPLETENESS OR ACCURACY OF ITS DELINEATION OF SUCH UNDERGROUND UTILITIES WHICH MAY BE ENCOUNTERED, BUT WHICH ARE NOT SHOWN ON THESE DRAWINGS.)

MARK	DATE	DESCRIPTION	BY

TOPOGRAPHIC SURVEY
SANTA TERESA HIGH SCHOOL
6150 Snell Avenue
San Jose



DATE: 10/19/2017
 SCALE: 1"=20'
 DRAWN BY: WAK
 DESIGNED BY: PCW
 CHECKED BY: PCW
 COPYRIGHT 2017, CARROLL ENGINEERING
 ALL RIGHTS RESERVED

131 S. WINCHESTER BLVD.
 SUITE 110-114
 SAN JOSE, CA 95128
 TEL: 408-261-0950
 FAX: 408-261-0950
 E-MAIL: Robert@carroll-engineering.com

CARROLL ENGINEERING

engineers and surveyors

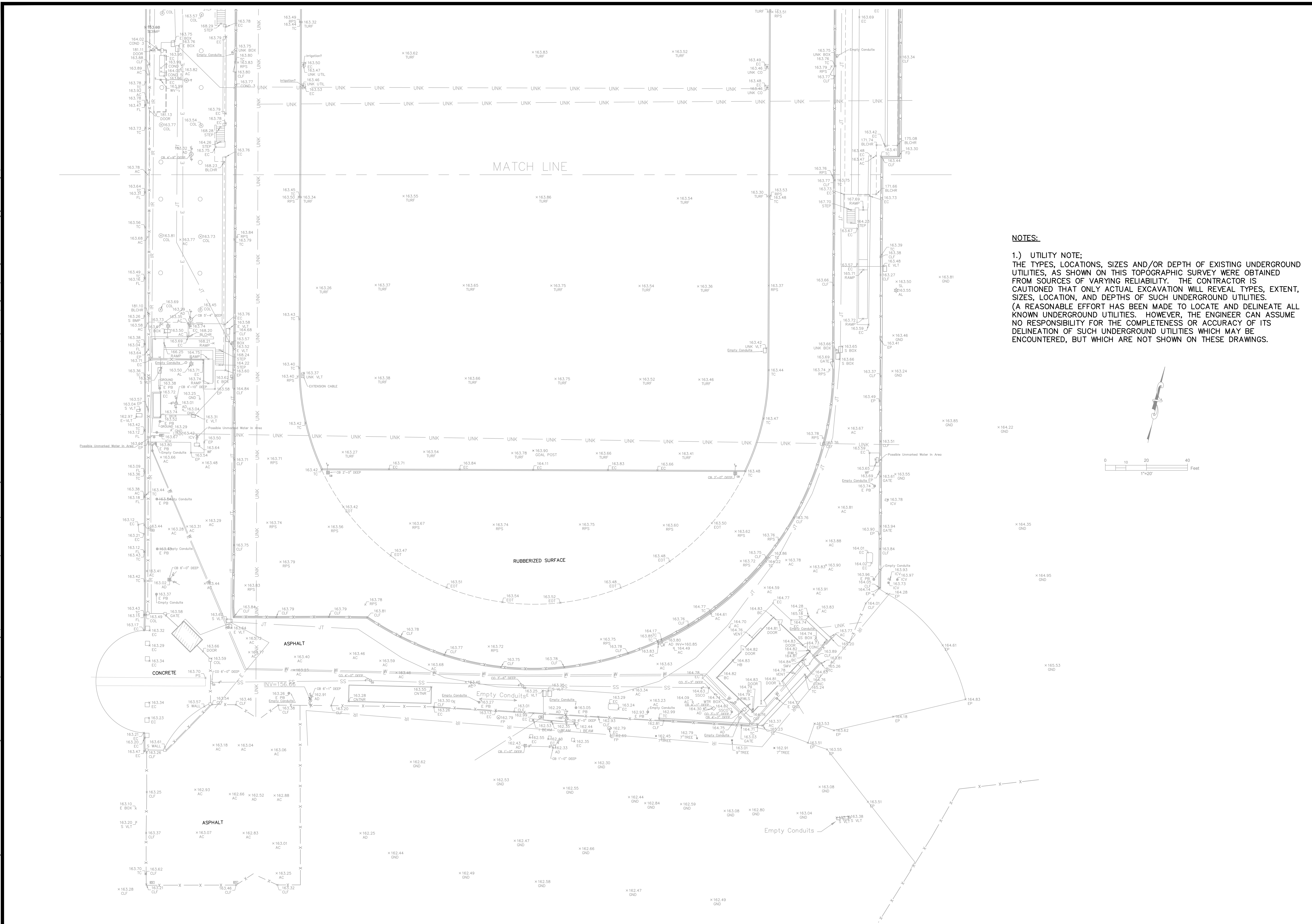
SHEET
1

JOB NO. 2232

UNAUTHORIZED CHANGES & USES: The engineer preparing these plans will not be responsible for, or liable for, unauthorized changes to or uses of these plans. All changes to the plans must be in writing and must be approved by the preparer of these plans.

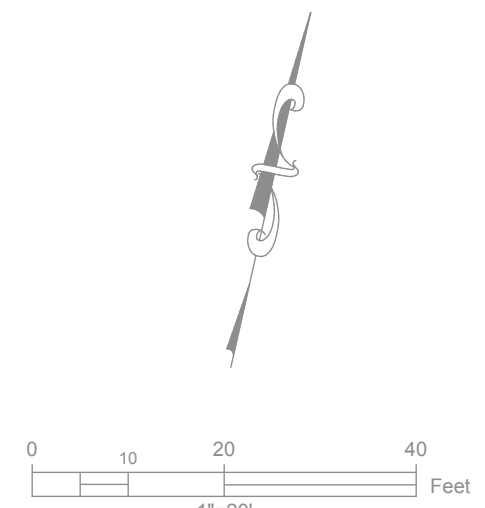
C:\2232 - Santa Teresa HS Track & Field\DWG\2232topo.dwg 10-19-17 12:00:09 PM philip

Construction Contractor agrees that, in accordance with generally accepted construction practices, construction contractor shall be required to assume sole and complete responsibility for job site conditions during the course of construction of the project including safety of all persons and property; that this requirement shall be made to apply continuously and not be limited to normal working hours, and construction contractor further agrees to defend, indemnify and hold design professional harmless from any and all liability, real or alleged, in connection with the performance of work on this project, excepting liability arising from the sole negligence of design professional.



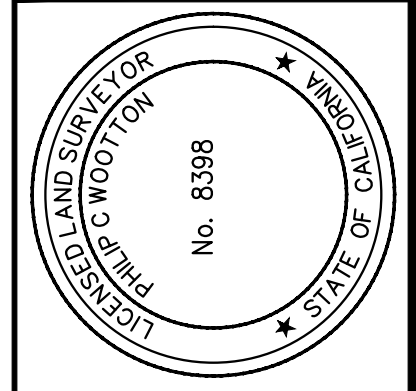
NOTES:

1.) UTILITY NOTE;
THE TYPES, LOCATIONS, SIZES AND/OR DEPTH OF EXISTING UNDERGROUND UTILITIES, AS SHOWN ON THIS TOPOGRAPHIC SURVEY WERE OBTAINED FROM SOURCES OF VARYING RELIABILITY. THE CONTRACTOR IS CAUTIONED THAT ONLY ACTUAL EXCAVATION WILL REVEAL TYPES, EXTENT, SIZES, LOCATION, AND DEPTHS OF SUCH UNDERGROUND UTILITIES. (A REASONABLE EFFORT HAS BEEN MADE TO LOCATE AND DELINEATE ALL KNOWN UNDERGROUND UTILITIES. HOWEVER, THE ENGINEER CAN ASSUME NO RESPONSIBILITY FOR THE COMPLETENESS OR ACCURACY OF ITS DELINEATION OF SUCH UNDERGROUND UTILITIES WHICH MAY BE ENCOUNTERED, BUT WHICH ARE NOT SHOWN ON THESE DRAWINGS.



MARK	DATE	DESCRIPTION	BY

TOPOGRAPHIC SURVEY
SANTA THERESA HIGH SCHOOL
6150 Snell Avenue
San Jose California



DATE: 10/19/17
SCALE: 1"=20'
DRAWN BY: WAK
DESIGNED BY: PCW
CHECKED BY: PCW
COPYRIGHT 2017, CARROLL ENGINEERING
ALL RIGHTS RESERVED

1031 S. WINCHESTER BLVD.
SUITE 104
SAN JOSE, CA 95128
PHONE: 408-261-0999
FAX: 408-261-0999
E-MAIL: Rob@carroll-engineering.com

Carroll ENGINEERING
engineers and surveyors

SHEET
2
JOB NO. 2232

UNAUTHORIZED CHANGES & USES: The engineer preparing these plans will not be responsible for, or liable for, unauthorized changes to or uses of these plans. All changes to the plans must be in writing and must be approved by the preparer of these plans.